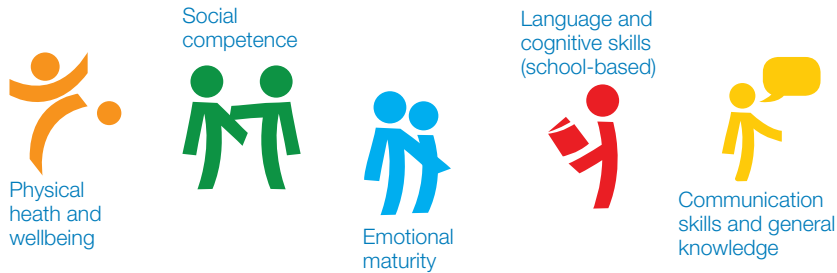


Policy Makers and Governments

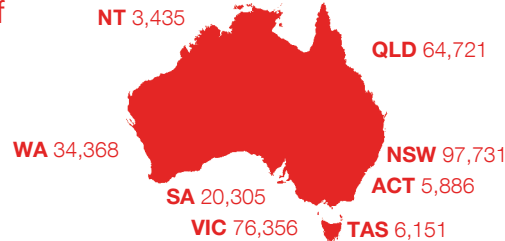
The AEDC is a reliable measure of child development across five domains.



Use the AEDC as an early indicator of human capability within your jurisdiction.

The AEDC provides comprehensive early childhood data at a community, jurisdictional and national level.

In 2018, over 96% of Australian children were included numbering:



The AEDC provides a basis for resource allocation.

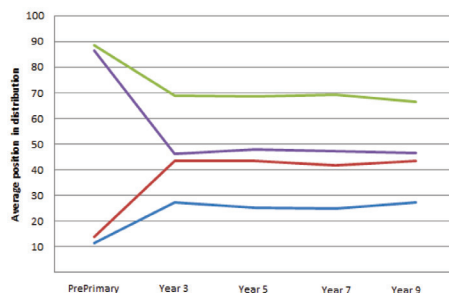
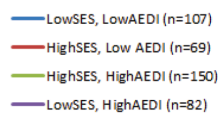
The AEDC is related to socio-economic status however there are communities and jurisdictions that are bucking the trend.



Review what policies and services might be supporting families and children.

The years before school provide an opportunity to increase later equalities in academic achievement and life success.

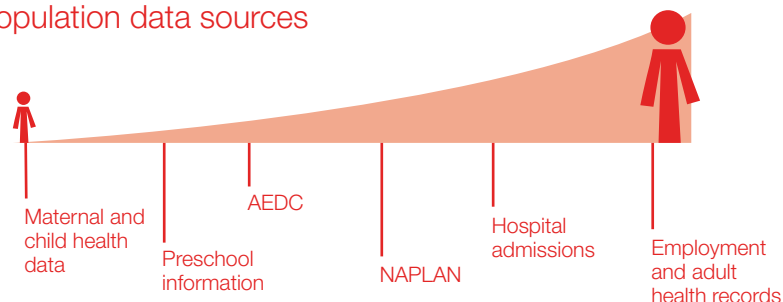
Average rank of test scores (NAPLAN Reading) through school by socio-economic status and rank position on the AEDC.



Review differential impacts of policy decisions across socio-economic status spectrum.

As budgets get tighter it is important to know that we are investing in programmes and services that make a difference.

Population data sources



Use the AEDC results over time to evaluate the impact of your policies.