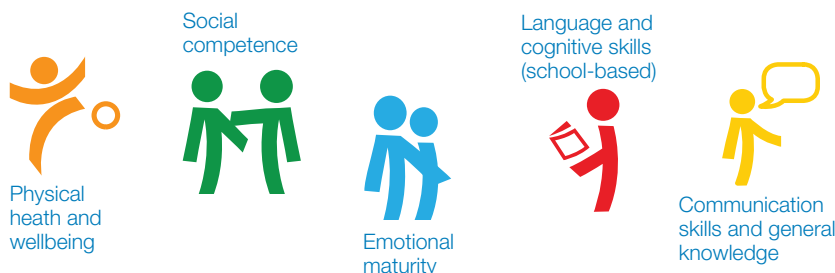


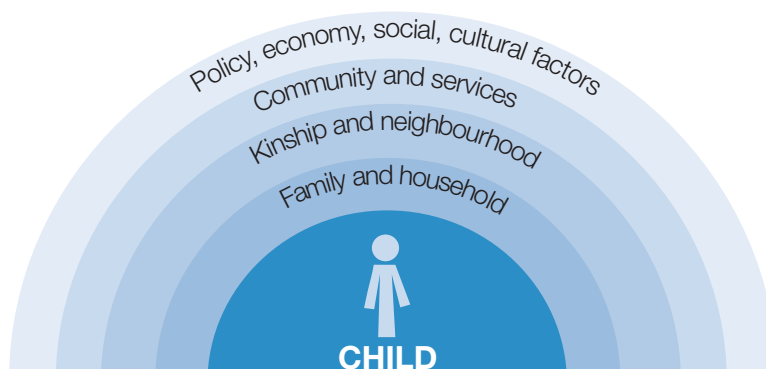
Early Childhood Sector

The AEDC is a reliable measure of child development across five domains.



Use the AEDC confidently as a holistic measure of child development in your community.

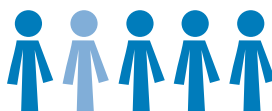
The AEDC is a starting point for identifying the needs of children in your community.



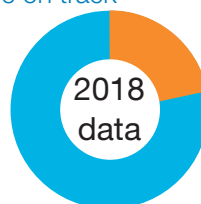
Use the AEDC results to start a conversation with other service providers in your area.

Early childhood services have an important role in children's development.

The AEDC shows **1 in 5** children are developmentally vulnerable on one or more domain



The majority are on track



Every early childhood provider impacts on the AEDC results.

Good programs at critical points in development are able to shape children's outcomes across five domains.



Critically evaluate your programs in line with national quality standards.

The AEDC can be used to identify strengths in your area.

protective, supportive relationships
social skills
adequate family income and housing
high quality universal programmes

access/availability of community services
breastfeeding
independence
competent and stable care
child and family-friendly public policies

participation in community activities

PROMOTE RESILIENCE THROUGH

Monitor improvements in the percentage of children on-track over time.